

Wing Nut

Thread Type: UNC / BSW - Coarse

Thread Direction: Right Hand

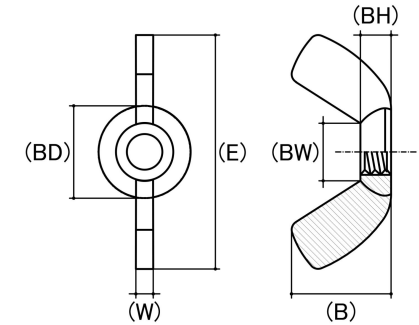
Material: Stainless Steel

Class Grade: A4-70 G316

Corrosion Protection Level: Ultimate

Standard: ANSI B18.17

Comments: UNC and BSW have the same thread per inch (TPI) value, except for 1/2"



*Cad Drawings shown for graphic representation only.**

Size	Thread Pitch (TPI)	Thread Type	Overall Nut Height (B) (mm)		Boss Diameter (BD) (mm)		Wing Span Range (E) (mm)		Wing Thickness (W) (mm)		Boss Height (BH) (mm)		Between Wings (BW) (mm)		sku (Part Number)
			Min	Max	Min	Max	Min	Max	Min	Max	Min	Max	Min	Max	
#10-24 (3/16")	24 TPI	Coarse	9.60	11.00	9.91	10.93	19.00	24.00	2.54	3.56	3.56	4.58	5.59	6.86	41WSC1024M
1/4"	20 TPI	Coarse	11.00	13.50	11.43	12.70	24.00	28.00	3.56	4.58	4.32	5.59	6.61	9.91	41WSC14M
5/16"	18 TPI	Coarse	13.60	15.50	12.96	14.74	26.00	32.00	4.32	5.34	5.08	6.35	8.13	9.91	41WSC516M
3/8"	16 TPI	Coarse	16.50	18.50	16.26	17.78	33.00	37.00	5.08	6.10	6.61	7.62	10.67	12.20	41WSC38M
5/8"	11 TPI	Coarse	31.00	35.00	28.71	30.23	64.00	71.00	8.64	10.16	12.96	13.97	20.32	22.86	41WSC58M

Disclaimer:

Dimensional data and technical information was obtained from publically available sources and not acquired through standard agencies. It has been completed and compiled for reference purposes only; where discrepancies are found they are subject to change without notice. Bolt & Nut Australia makes no warranties or representations regarding the accuracy and validity of the compiled information and data. Contact the relevant standard authorities for accurate and detailed information.

* Cad Drawings may not reflect diameter, thread length or overall length.

© Bolt & Nut Australia Pty Ltd. All rights reserved.

Version: 12 Dec 2024